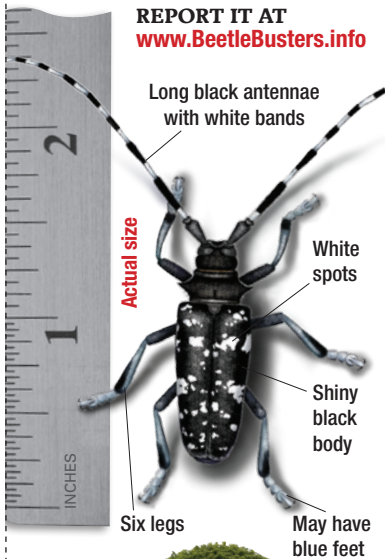


SEARCH FOR THE ASIAN LONGHORNED BEETLE (also known as ALB)

REPORT IT AT www.BeetleBusters.info



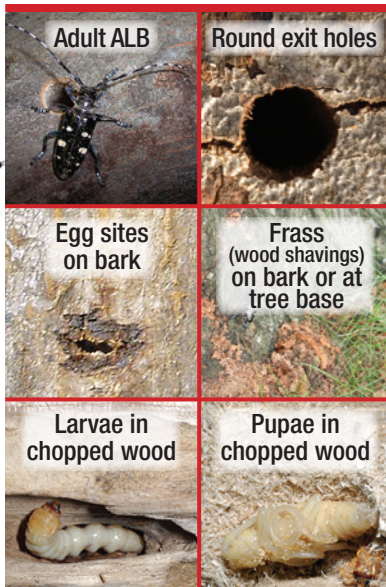
Look for the beetle on or near the trees it likes:



Other "host" trees: elm, ash, London planetree, poplar, hackberry, mountain ash, mimosa and katsura

LOOK FOR THE SIGNS

You can see the adult ALB from June through October — but you can spot the signs year-round!



Don't move firewood — you could be moving the ALB.



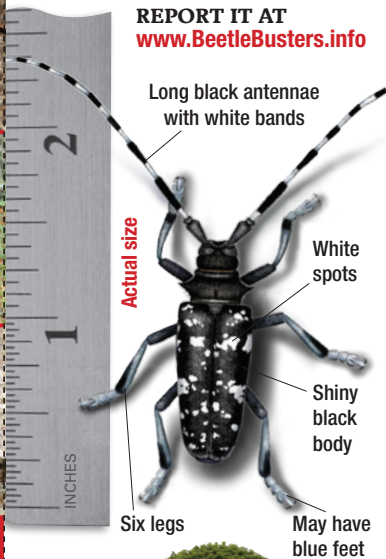
Capture and freeze the beetles you find, take photos, and report your sightings at www.BeetleBusters.info

The U.S. Department of Agriculture is an equal opportunity provider and employer.

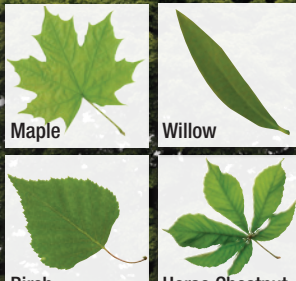
Issued February 2011
Program Aid No. 2069

SEARCH FOR THE ASIAN LONGHORNED BEETLE (also known as ALB)

REPORT IT AT www.BeetleBusters.info



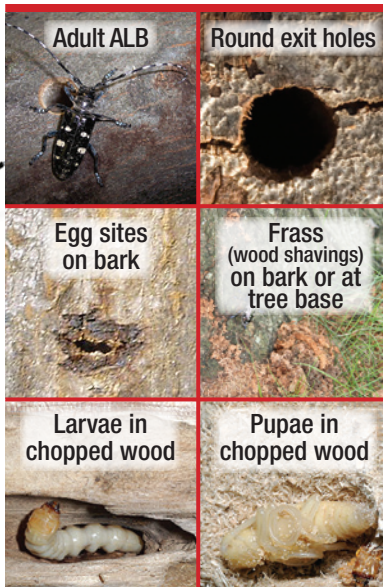
Look for the beetle on or near the trees it likes:



Other "host" trees: elm, ash, London planetree, poplar, hackberry, mountain ash, mimosa and katsura

LOOK FOR THE SIGNS

You can see the adult ALB from June through October — but you can spot the signs year-round!



Don't move firewood — you could be moving the ALB.



Capture and freeze the beetles you find, take photos, and report your sightings at www.BeetleBusters.info

The U.S. Department of Agriculture is an equal opportunity provider and employer.

Issued February 2011
Program Aid No. 2069

Printing and assembly instructions:

1. Print this document. For accurate sizing, follow these instructions:
 - Set Paper Size: File > Page Setup > Paper Size > US Letter
 - Set Layout: File > Print > Page Scaling > None (Do not select Fit to Printable Area or Shrink to Printable Area.)
 - Select Print/Okay.
2. Cut on dotted lines for each card.
3. Fold each card in half length-wise; if you prefer, seal with glue or tape.
4. Laminate if desired.