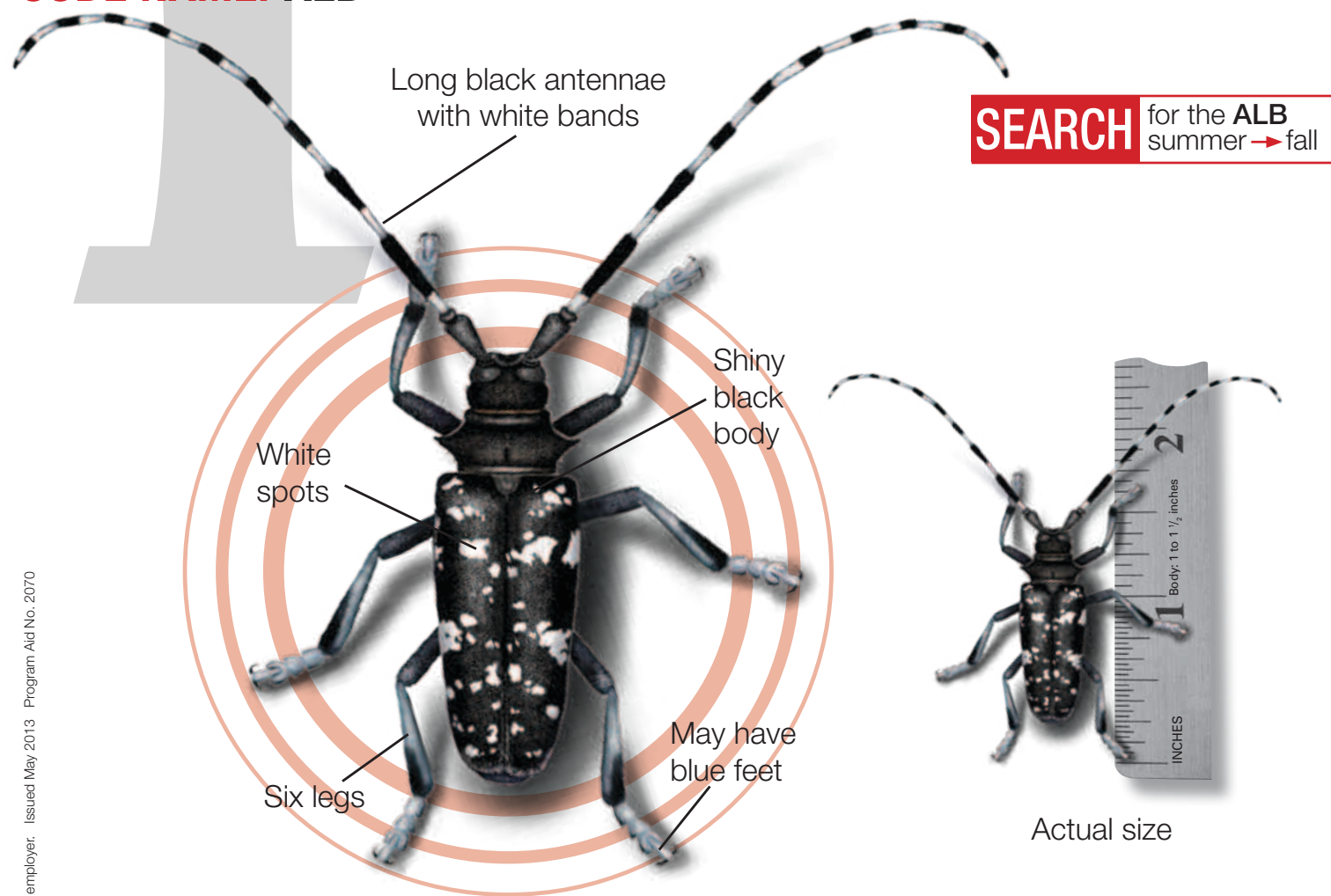


# SEARCH FOR THE ASIAN LONGHORNED BEETLE

CODE NAME: ALB



## It's attacking our trees!

Look for the beetle on or near the trees it likes:



The beetle also prefers: Birch, Ash, London Plane Tree, Poplar, Hackberry, Golden Rain Tree, Mountain Ash, Mimosa, and Katsura.

# SIGNS

FOLLOW THE **SIGNS**  
Spot the ALB in the different stages of its **life cycle**. Find the **signs** it leaves behind.



Don't move firewood because you could be moving the ALB.

SEARCH SIGNS  
SAVE REPORT

# REPORT

To report an ALB sighting or signs of the beetle, go to:  
[www.AsianLonghornedBeetle.com](http://www.AsianLonghornedBeetle.com)

As a Beetle Buster, I will search for the beetle and report to the U.S. Department of Agriculture (USDA) when I see the ALB or the signs it leaves behind.



BE A **BEETLE BUSTER**



In the Eastern United States alone, **4 million jobs** depend on forests that are vulnerable to ALB!

New England produces most of the maple syrup for the United States. If the ALB reaches those forests, breakfast will never be the same!



In Worcester, MA, more than **25,000 trees** had to be cut down in 1 year due to the ALB.

**SAVE AMERICA'S TREES**